



Revolutionary **Pre-Painted Steel**

LUXTM

LUX PRE-PAINTED STEEL


Lux is a revolutionary and unique new product that will change the way you approach building materials. Experience the strength, versatility and durability of pre-painted steel while enjoying the visual appearance of other materials such as wood, zinc, corten, fabric, or hair-line.

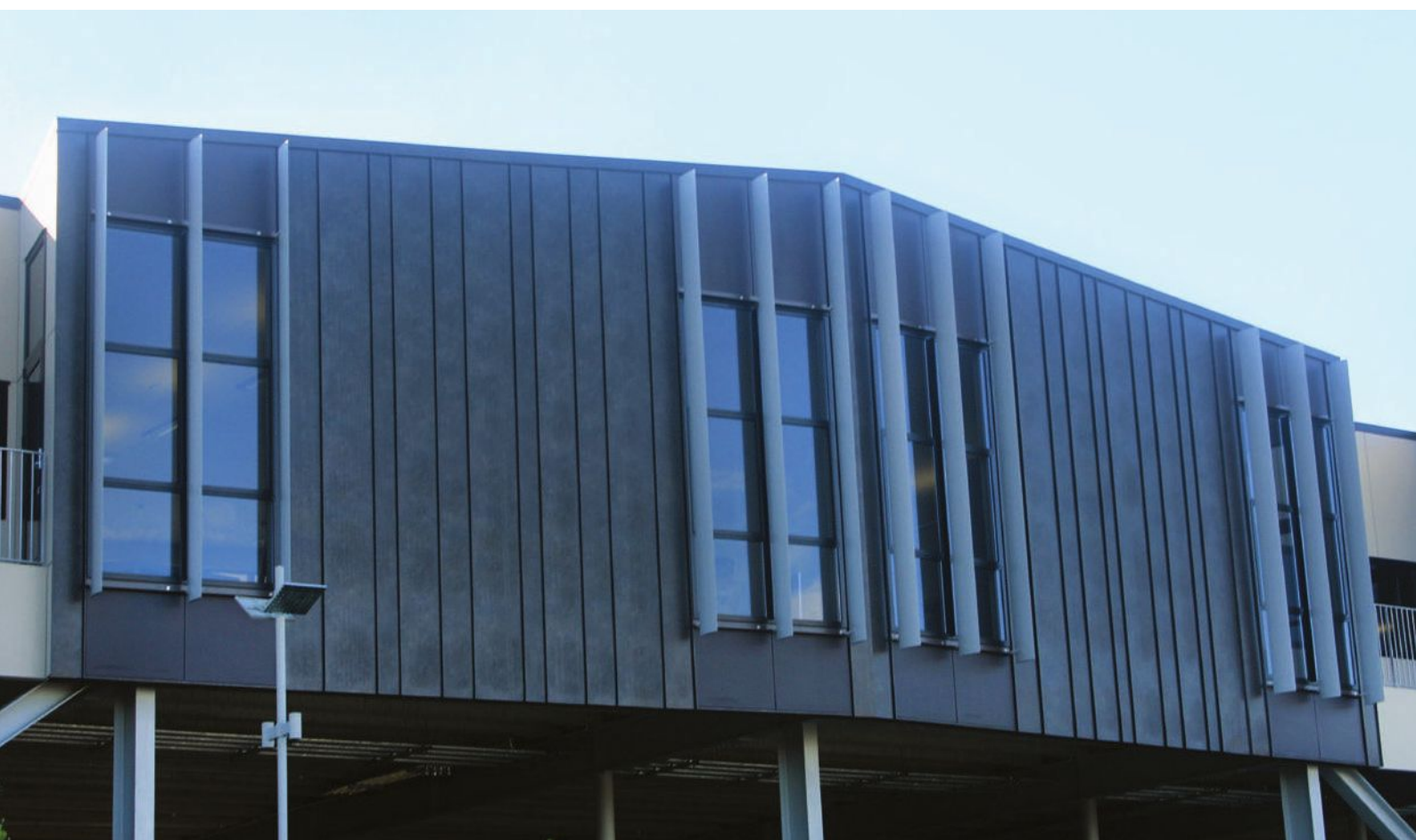
Lux consists of a steel base, with a zinc aluminium coating (45% zinc and 55% aluminium alloy) to a normal mass of 200g/m².

Lux utilises the same PVDF paint technology as Zenex+ ensuring that it will withstand even the toughest of marine and industrial environments. The pre-painted and printed finishes are applied through a three bake process, further enhancing durability and corrosion resistance.

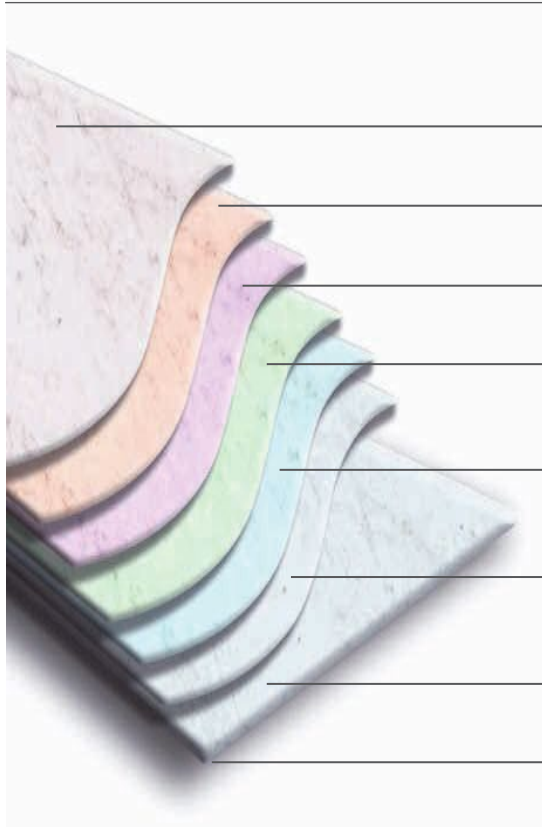
Lux has a full range of warranties available on all its products. Warranty periods are determined by the final application and location of the building; the environmental categories are described in AS/NZS 2728:2013.

* All Lux is available in 0.55mm base metal thickness and is suitable for a wide range of architectural roofing, internal and external wall claddings, rainwater goods and general building usage.

	Resistance to flaking, peeling and excessive fading				Will not perforate as a result of corrosion			
	Roofing	Wall Cladding	Gutter/ Downpipe	Fascia	Roofing	Wall Cladding	Gutter/ Downpipe	Fascia
Mild, Moderate, ISO category 1-3	20 yrs	20 yrs	12 yrs	12 yrs	30 yrs	20 yrs	12 yrs	15 yrs
Severe Marine ISO category 4	15 yrs	15 yrs	10 yrs	10 yrs	20 yrs	20 yrs	10 yrs	15 yrs



LUX COATING LAYERS



- **PROTECTIVE FILM**
Prevents scratches and damage.
- **CLEAR COAT**
Protects and enhances the appearance of the surface.
- **PRINTING**
Various creative print patterns.
- **BASE COLOUR**
Provides a printed layer with excellent mechanical and chemical properties.
- **PRIMER**
Improves workability, corrosion resistance and adhesion to primer coating.
- **CHEMICAL TREATMENT**
Improves corrosion resistance and adhesion of the base metal.
- **DURALUME BASE METAL**
With AZ200 coating provides superior corrosion resistance.
- **BACK**
Primer improves corrosion resistance of the reverse side.

CORTEN



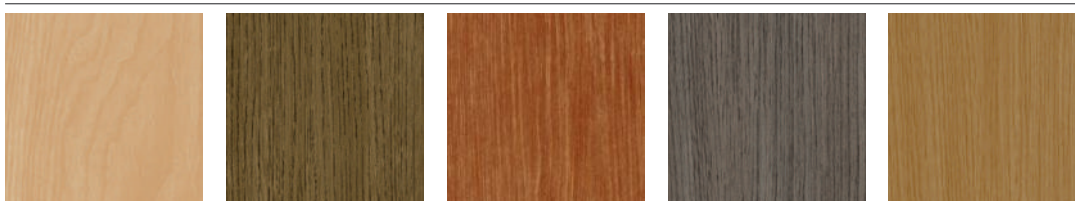
HAIR-LINE



ZINC



WOOD



FABRIC



Disclaimer: While the colours in this booklet are as closely matched to the true colour as possible, they are not exact. For a true colour match please request a colour swatch from your local KiwiColour distributor/representative.

REVOLUTIONARY PRE-PAINTED STEEL

CORTEN | HAIR-LINE | ZINC | WOOD | FABRIC

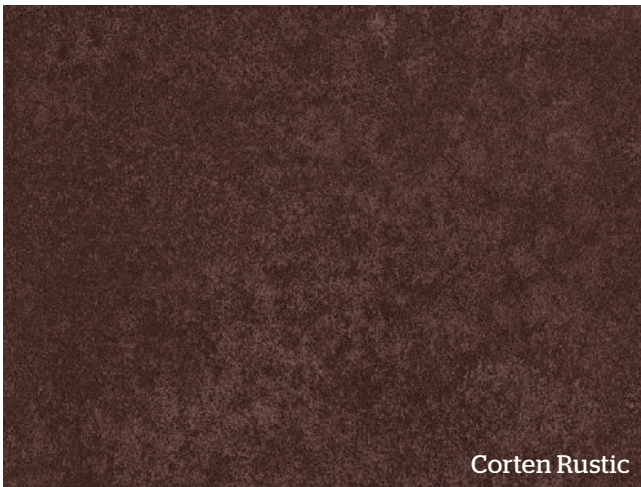


CORTEN

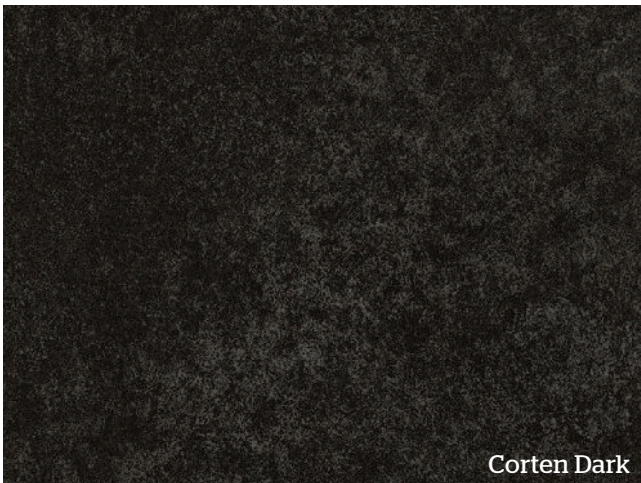
This architecturally inspired weathered look brings out the carefully rusted traditional Corten in a range of unique, fashionable colours.



Corten Bronze



Corten Rustic

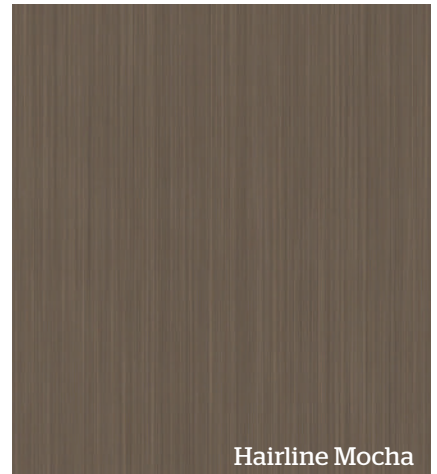
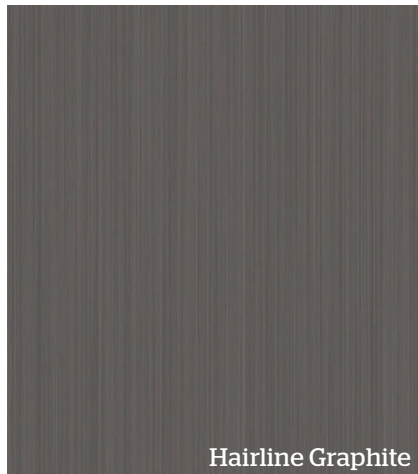
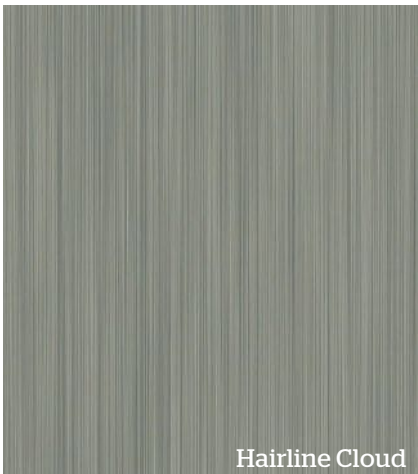


Corten Dark



HAIR-LINE

Lux's hair-line pattern is created by evenly polishing the surface of the steel, and then carefully adding hair-line patterns, giving it its unique and contemporary finish.



REVOLUTIONARY PRE-PAINTED STEEL

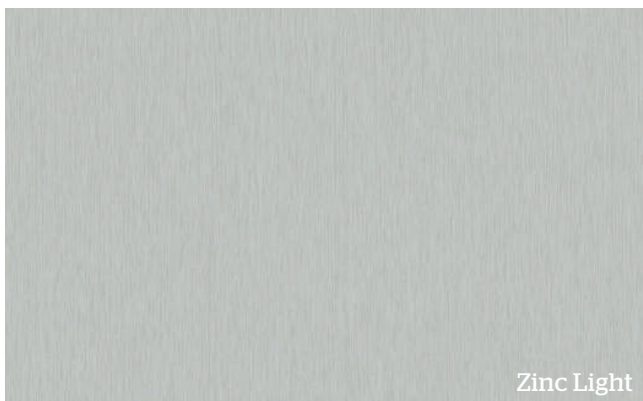
CORTEN | HAIR-LINE | **ZINC** | WOOD | FABRIC



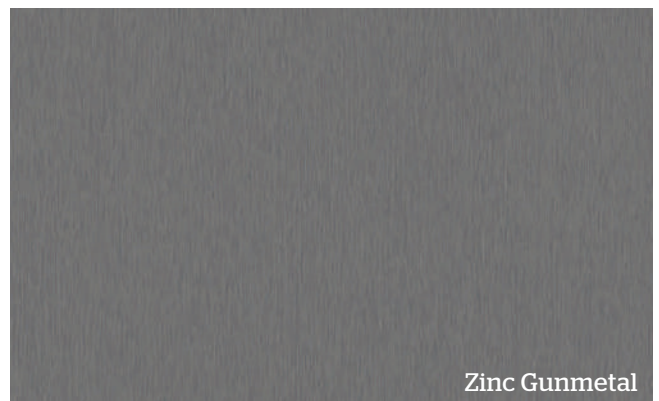
ZINC

The simple yet timeless Zinc pattern replicates the natural look of pure zinc, making it ideal for smooth, polished interiors and exteriors.





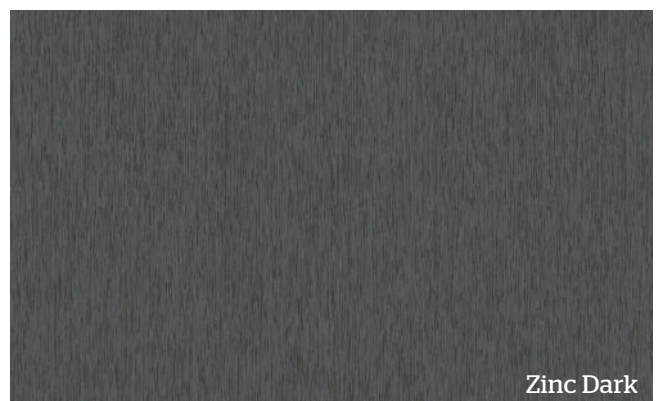
Zinc Light



Zinc Gunmetal



Zinc Taupe



Zinc Dark

REVOLUTIONARY PRE-PAINTED STEEL

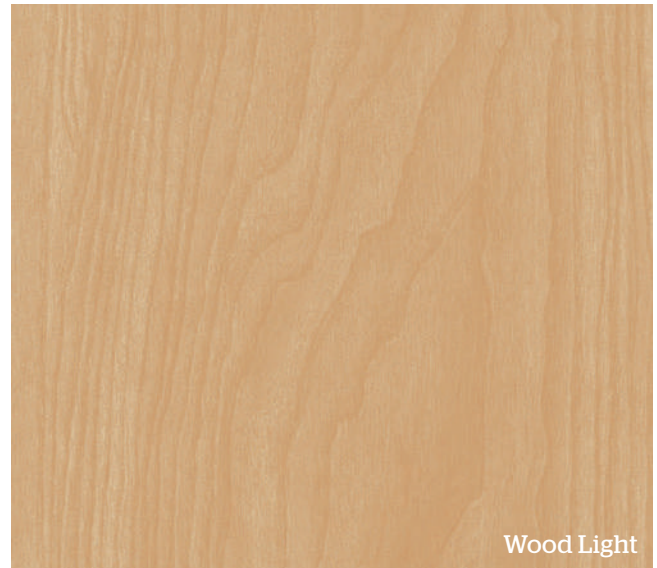
CORTEN | HAIR-LINE | ZINC | **WOOD** | FABRIC



WOOD

Designed to replicate a natural timber appearance, Lux's range of Wood patterns are both aesthetic and durable, giving any building a warm and elegant finish.





Wood Light



Wood Natural



Wood Maple



Wood Dark



Wood Chestnut

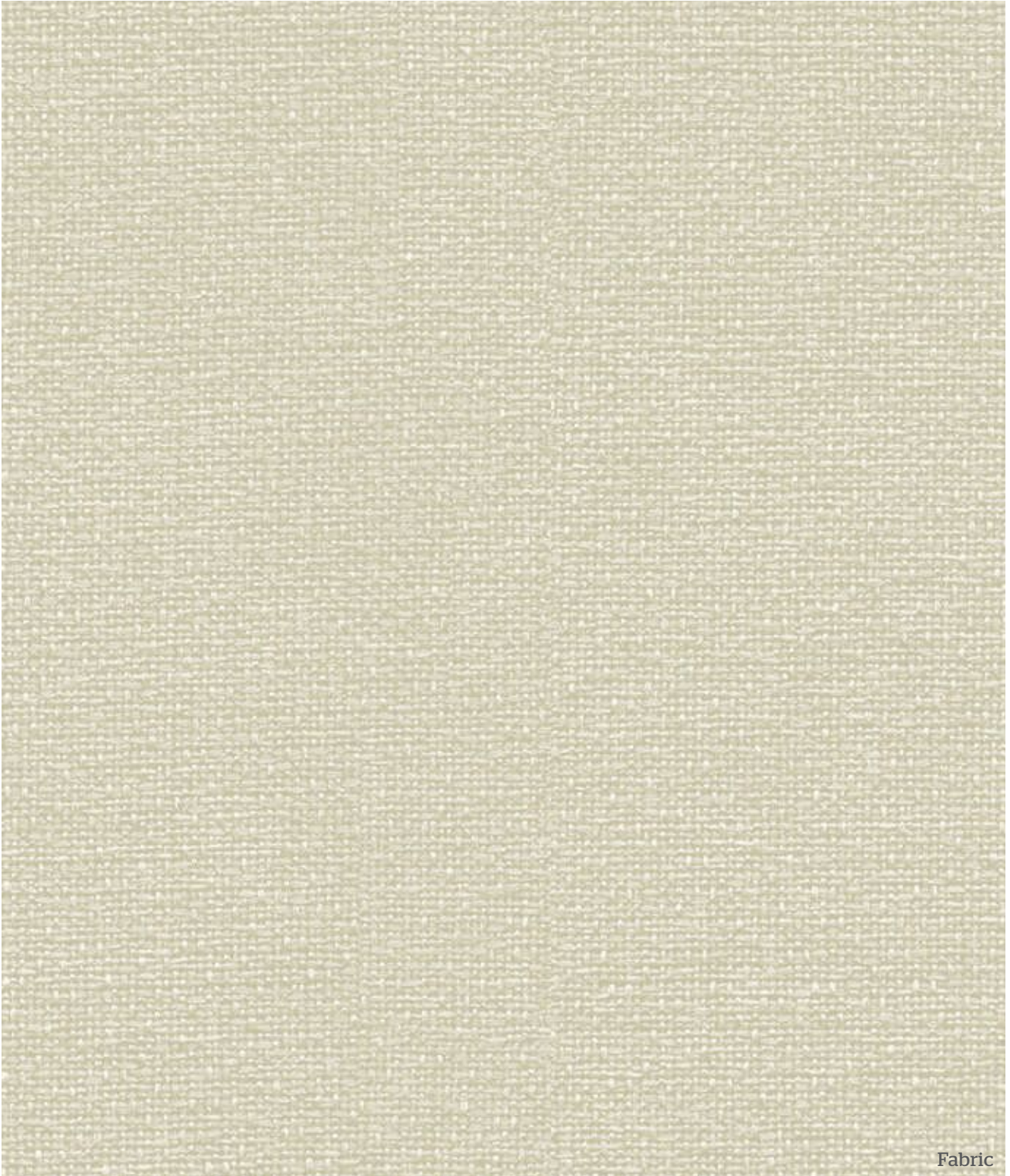
REVOLUTIONARY PRE-PAINTED STEEL

CORTEN | HAIR-LINE | ZINC | WOOD | **FABRIC**



FABRIC

This unique pattern has the appearance of soft, textured fabric, with a luxuriously smooth finish, perfect for interior cladding.



Fabric



STEEL

— *MEETS* —

ART



Ph: 09 277 2700 | **Email:** info@kiwicolour.co.nz | www.kiwisteel.co.nz
12 Hautu Drive, Wiri. PO Box 98-851, Wiri, Auckland, New Zealand

